

THIS INSTRUMENT PREPARED BY
 DAVID P. LINDLEY
 OF
CAULFIELD and WHEELER, INC.
 SURVEYORS - ENGINEERS - PLANNERS
 7301-A WEST PALMETTO PARK ROAD, SUITE 100A
 BOCA RATON, FLORIDA 33433 - (561)392-1991
 LB #3591

LOXAHATCHEE GROVES COMMONS

BEING A REPLAT OF LOT 2, SIMON TRUST BOUNDARY PLAT, ACCORDING TO THE PLAT THEREOF, AS RECORDED IN PLAT BOOK 116, PAGE 26 OF THE PUBLIC RECORDS OF PALM BEACH COUNTY, FLORIDA.
 LYING IN SECTION 31, TOWNSHIP 43 SOUTH, RANGE 41 EAST, THE TOWN OF LOXAHATCHEE GROVES, PALM BEACH COUNTY, FLORIDA

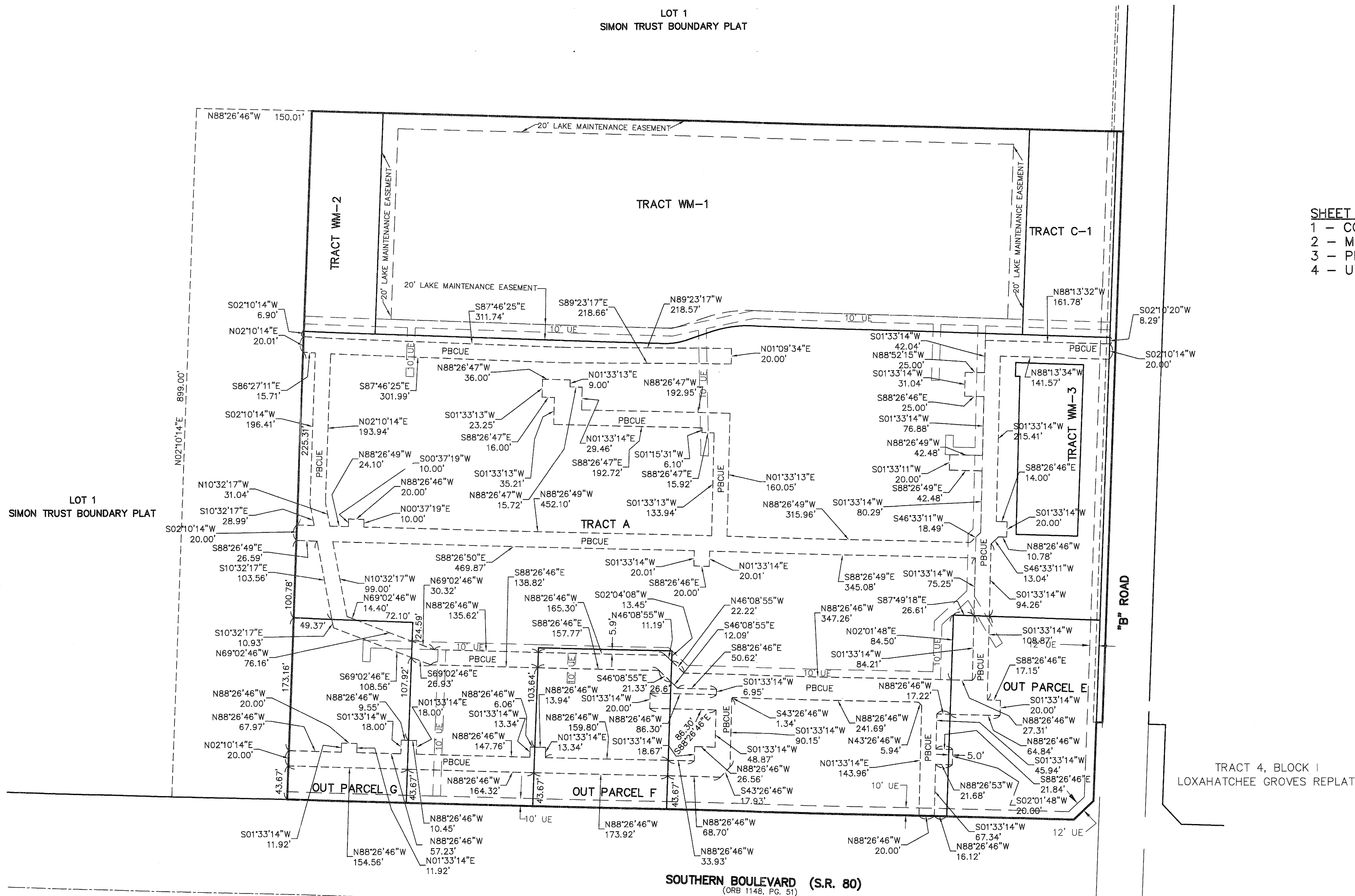
97

STATE OF FLORIDA
 COUNTY OF PALM BEACH
 THIS PLAT WAS FILED FOR
 RECORD AT _____ M.
 THIS _____ DAY OF _____
 A.D. 2015 AND DULY RECORDED
 IN PLAT BOOK _____ ON
 PAGES _____ AND _____
 SHARON R. BOCK
 CLERK AND COMPTROLLER

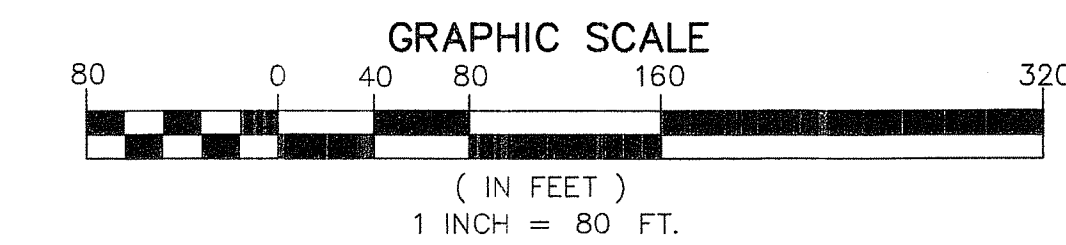
BY: _____
 DEPUTY CLERK

SHEET 3 OF 4

SHEET INDEX
 1 - COVER SHEET
 2 - MAP SHEET
 3 - PBC UTILITY EASEMENT GEOMETRY
 4 - UTILITY EASEMENT GEOMETRY



LEGEND:
 BST - BELL SOUTH TELEPHONE
 B.M. ELEV. - BENCHMARK ELEVATION
 F.D.O.T. - FLORIDA DEPARTMENT OF TRANSPORTATION
 FND - FOUND
 FPL - FLORIDA POWER & LIGHT
 LAE - DENOTES LIMITED ACCESS EASEMENT
 LBE - DENOTES LANDSCAPE BUFFER EASEMENT
 NGVD29 - NATIONAL GEODETIC VERTICAL DATUM OF 1929
 NAVD88 - NORTH AMERICAN VERTICAL DATUM OF 1988
 N.T.S. - DENOTES NOT TO SCALE
 O.R.B. - DENOTES OFFICIAL RECORDS BOOK
 (P) - DENOTES PLAT
 P.B. - DENOTES PLAT BOOK
 PBCUE - PALM BEACH COUNTY UTILITY EASEMENT
 PG. - DENOTES PAGE
 Δ - DENOTES DELTA (CENTRAL ANGLE)
 L - DENOTES ARC LENGTH
 R - DENOTES RADIUS
 R/W - DENOTES RIGHT-OF-WAY
 SF - DENOTES SQUARE FEET
 S.R. - DENOTES STATE ROAD
 UE - INDICATES UTILITY EASEMENT.
 P.R.M. ■ - INDICATES 4" X 4" X 24" PERMANENT
 REFERENCE MONUMENT MARKED LB 3591,
 UNLESS OTHERWISE NOTED



THIS SHEET FOR DETAIL OF VARIABLE WIDTH PALM BEACH COUNTY UTILITY EASEMENT GEOMETRY ONLY